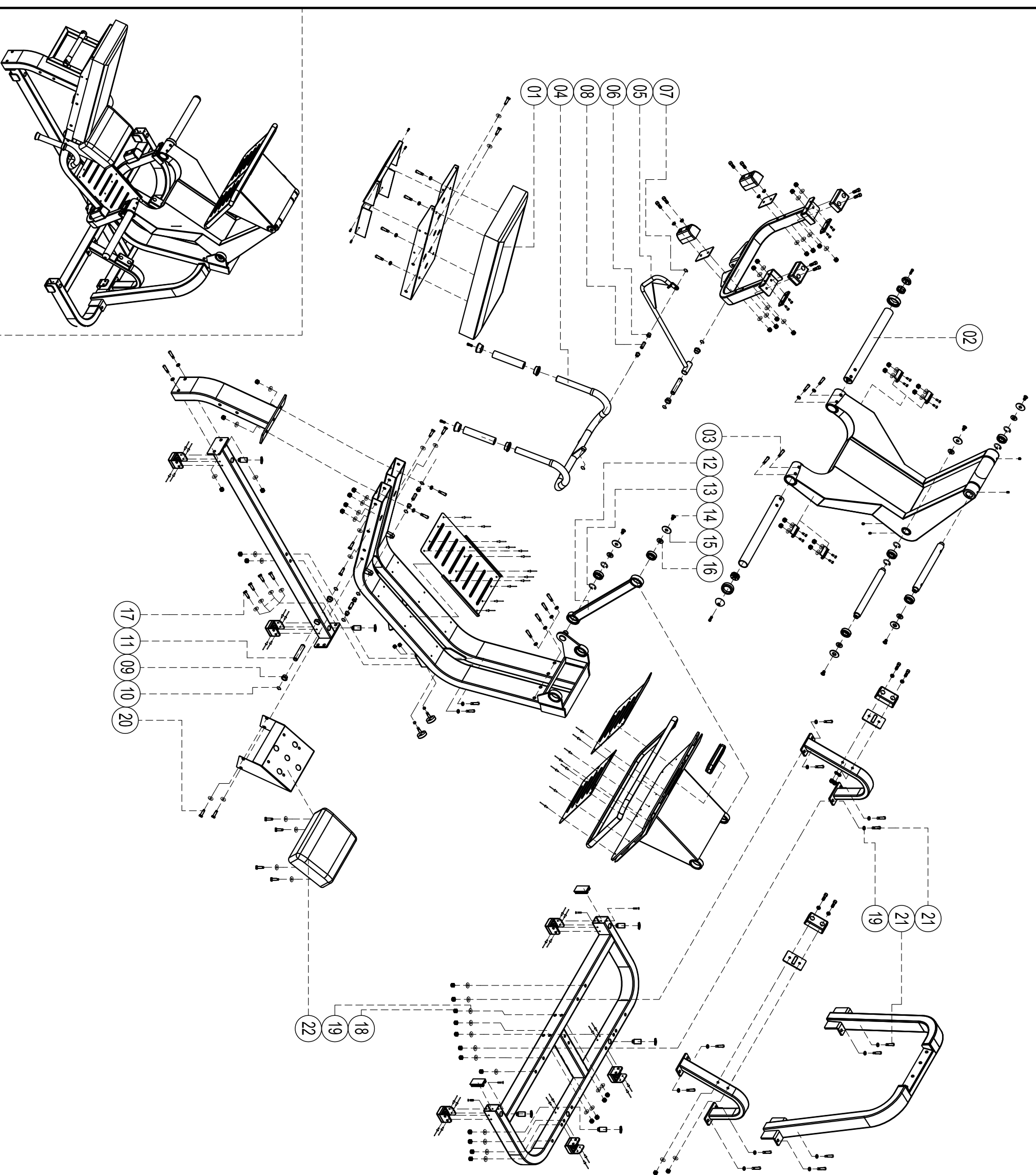


# DHZ-950 Leg Press

please note: parts didnt demitioned part and fasteners not listed on the iotroduction



NO.	Name	Quantity
01	Back cushion	1
02	Back cushion	2
03	M12*45 screw	4
04	Handle group Cheese head inner hex	1
05	Bending connecting pole combination	1
06	Nylon shaft sleeve $\phi 12 * \phi 20 * 7$	9
07	Circclip $\phi 13$ (outside)	6
08	Small pin $\phi 13 * 38$	3
09	Nylon shaft sleeve $\phi 30 * \phi 20 * 15$	4
10	Circclip $\phi 20$ (outside)	4
11	Small shaft $\phi 20 * 105$	2
12	Connecting pole combination	1
13	Circclip $\phi 55$ (inside)	6
14	M10*20 screw	6
15	Large gasket C068 $\phi 50 * T2.5$ Countersunk head inner hex	6
16	Small gasket C088 $\phi 33 * T2.5$	6
17	Hex screw M12*75	6
18	Hex nut(self-locking)M12	38
19	Flat washer T1.5* $\phi 12 * \phi 20$	52
20	Hex screw M12*140	8
21	Hex screw M12*110	12
22	Seat cushion	1